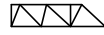
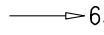
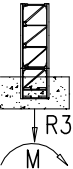
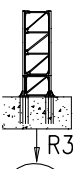
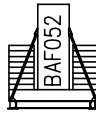
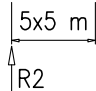





Torre/Reazioni – Masts/Reactions – Mat/Réactions – Maste/Eckdrücke – Măstil/Reacciones – Tramo/Reacções

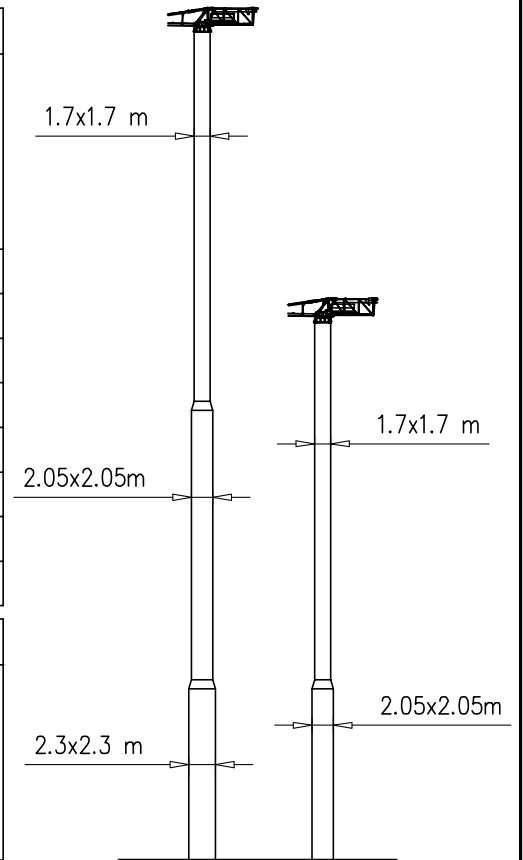
SK1700

 20 m —  65 m

Torre/Masts/Mat/Maste/Măstil/Tramo															
	H[m]	4f/4f BF117	4f/4f BF052	4f/4f BF039	4f/2f SB117	4f/2f SB052	4f/2f SB039	2f/2f ST117	2f/2f ST052	2f/2f ST039	2f/2f STB117	2f/2f STB039	2f/2f RA039	4f/2f SBB039	4f/2f SBB117
TRO 	48.7	1					1			10					
	48.7	1					1	3		1					
TTD 															
	48.7	1										9	1	1	

Torre/Masts/Mat/Maste/Măstil/Tramo															
	H[m]	4f/4f BF117	4f/4f BF052	4f/4f BF039	4f/2f SB117	4f/2f SB052	4f/2f SB039	2f/2f ST117	2f/2f ST052	2f/2f ST039	2f/2f STB117	2f/2f STB039	2f/2f RA039	4f/2f SBB039	4f/2f SBB117
BAF052 	53.5	1					1			10					
	53.5	1					1	3		1					
CAF 															
	53.5	1										9	1	1	

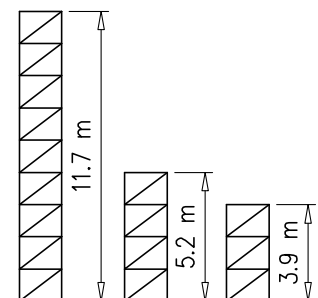
Torre/Masts/Mat/Maste/Măstil/Tramo															
	H[m]	4f/4f BF117	4f/4f BF052	4f/4f BF039	4f/2f SB117	4f/2f SB052	4f/2f SB039	2f/2f ST117	2f/2f ST052	2f/2f ST039	2f/2f STB117	2f/2f STB039	2f/2f RA039	4f/2f SBB039	4f/2f SBB117
BAF052 	46.2	1					1			8					
	46.2	1					1	2		2					
CATR 															
CATC 															
	46.2	1										7	1	1	



H=0–37 m		H=38–58 m	
R1	95 t	R1	117 t
R2	102 t	R2	122 t
R3	75 t	R3	89 t
M	295 tm	M	347 tm

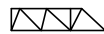

Peso zavorra—Ballast weight—  
Ballastgewicht—Peso de lastre

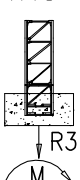
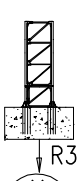
H	Tot.
0–40 m	70600 kg
40–58 m	105600 kg





Torre/Reazioni – Masts/Reactions – Mat/Réactions – Maste/Eckdrücke – Mästil/Reacciones – Tramo/Reações

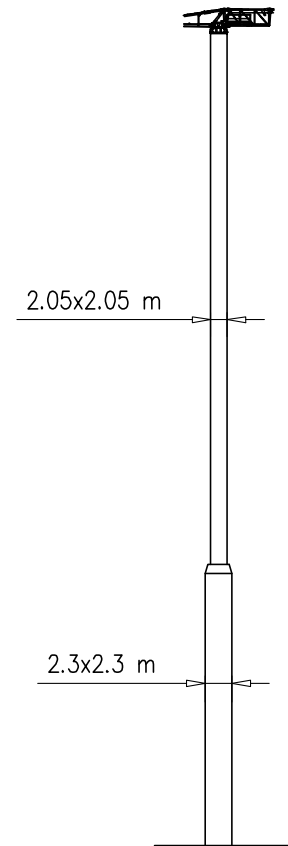
SN2050

 20 m  65 m

Torre/Masts/Mat/Maste/Mästil/Tramo															
	H[m]	4f/4f BF117	4f/4f BF052	4f/4f BF039	4f/2f SB117	4f/2f SB052	4f/2f SB039	2f/2f ST117	2f/2f ST052	2f/2f ST039	2f/2f STB117	2f/2f STB039	2f/2f RA039	4f/2f SBB039	4f/2f SBB117
TRO 	64.4	1	1				1			11					
	64.4	1	1				1	3		2					
TTD 															
	*	64.4	1	1			1					10	1		

Torre/Masts/Mat/Maste/Mästil/Tramo															
	H[m]	4f/4f BF117	4f/4f BF052	4f/4f BF039	4f/2f SB117	4f/2f SB052	4f/2f SB039	2f/2f ST117	2f/2f ST052	2f/2f ST039	2f/2f STB117	2f/2f STB039	2f/2f RA039	4f/2f SBB039	4f/2f SBB117
 6x6 m R2 CAF	69.0	1	1				1			11					
	69.0	1	1				1	3		2					
*	69.0	1	1				1					10	1		

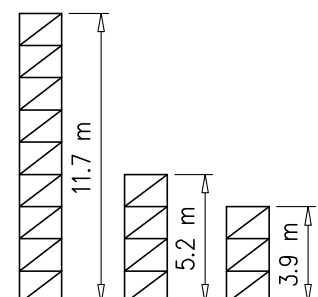
Torre/Masts/Mat/Maste/Mästil/Tramo															
	H[m]	4f/4f BF117	4f/4f BF052	4f/4f BF039	4f/2f SB117	4f/2f SB052	4f/2f SB039	2f/2f ST117	2f/2f ST052	2f/2f ST039	2f/2f STB117	2f/2f STB039	2f/2f RA039	4f/2f SBB039	4f/2f SBB117
 6x6 m R1 CATR	62.0	1	1				1			9					
	62.0	1	1				1	3							
*	62.0	1	1				1					8	1		



H=0–45 m		H=46–69 m	
R1	125 t	R1	140 t
R2	130 t	R2	144 t
R3	95 t	R3	103 t
M	486 tm	M	570 tm

Peso zavorra–Ballast weight–  
Ballastgewicht–Peso de lastre

H	Tot.
0–53 m	102320 kg
54–61 m	112460 kg
62–69 m	132740 kg



Curve di carico – Courbes de charges – Load diagrams – LastKurven – Curvas de cargas

Pmax 4000 kg

	20400 kg		2.5	27	30	35	40	45	50	55	60	65	m
		65 m	4000	4000	3770	3160	2410	2090	1830	1620	1450	1300	kg
	19200 kg		2.5	28.2	30	35	40	45	50	55	60	m	
		60 m	4000	4000	3880	3250	2780	2160	1890	1680	1500	kg	
	19200 kg		2.5	30.6	35	40	45	50	55	m			
		55 m	4000	4000	3470	2970	2310	2030	1800	kg			
	18000 kg		2.5	31.8	35	40	45	50	m				
		50 m	4000	4000	3750	3210	2500	2200	kg				
	16800 kg		2.5	33	35	40	45	m					
		45 m	4000	4000	3870	3160	2750	kg					
	15600 kg		2.5	34	35	40	m						
		40 m	4000	4000	3850	3400	kg						
	14400 kg		2.5	35	m								
		35 m	4000	4000	kg								
	13200 kg		2.5	30	m								
		30 m	4000	4000	kg								
	10800 kg		2.5	25	m								
		25 m	4000	4000	kg								
	7200 kg		2.5	20	m								
		20 m	4000	4000	kg								



Pmax 8000/4000 kg

	20400 kg		2.5	11	15	20	25	30	35	40	45	50	55	60	65	m
		65 m	8000	8000	6600	5910	4620	3770	3160	2410	2090	1830	1620	1450	1300	kg
	19200 kg		2.5	11.6	15	20	25	30	35	40	45	50	55	60	m	
		60 m	8000	8000	6920	6020	4750	3880	3250	2780	2160	1890	1680	1500	kg	
	19200 kg		2.5	12.3	15	20	25	30	35	40	45	50	55	m		
		55 m	8000	8000	7080	6150	5060	4130	3470	2970	2310	2030	1800	kg		
	18000 kg		2.5	13.2	15	20	25	30	35	40	45	50	m			
		50 m	8000	8000	7300	6400	5450	4450	3750	3210	2500	2200	kg			
	16800 kg		2.5	14.2	15	20	25	30	35	40	45	m				
		45 m	8000	8000	7620	6700	5350	4380	3680	3160	2750	kg				
	15600 kg		2.5	15	20	25	30	35	40	m						
		40 m	8000	8000	7020	5740	4700	3960	3400	kg						
	14400 kg		2.5	16.1	20	25	30	35	m							
		35 m	8000	8000	7300	5800	4750	4000	kg							
	13200 kg		2.5	17.2	20	25	30	m								
		30 m	8000	8000	7590	6100	5300	kg								
	10800 kg		2.5	18.9	20	25	m									
		25 m	8000	8000	7890	6250	kg									
	7200 kg		2.5	20	m											
		20 m	8000	8000	kg											



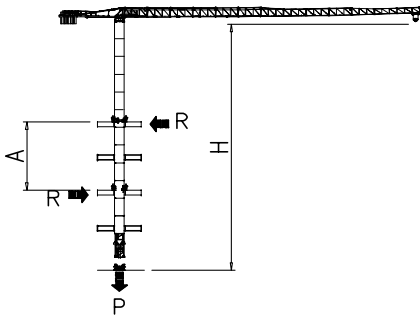
PESI E INGOMBRI – PACKING LIST – LISTE DE COLISAGE – GEWICHT UND ABMESSUNGEN

Denominazione Description	Disegno Draw	Pezzi Pieces	Dimensioni-Dimensions (mm)			Peso-Weight (kg)			
			L	W	H	Unit	Total		
Elemento di braccio Jib element Elément de èche Elemento de flecha	n°13		1	5500	1480	2290	2000	-	
	n°12		1	5280	1200	2170	1400	-	
	n°11		1	5270	1200	2150	1150	-	
	n°10		1	5260	1200	2150	900	-	
	n°9		1	5260	1200	2120	800	-	
	n°8		1	5240	1200	2100	700	-	
	n°7		1	5225	1200	2060	635	-	
	n°6		1	5200	1200	1630	500	-	
	n°5		1	5160	1200	1630	370	-	
	n°4		1	5140	1200	1610	350	-	
	n°3		1	5110	1200	1610	250	-	
	n°2		1	5090	1200	1260	210	-	
	n°1		1	5090	1200	1260	200	-	
	Punta braccio		1	700	1200	500	55	-	
Contorbraccio completo Complete counterjib Contreflèche complète Contraflecha completa		1	12560	1810	1480	5130	-		
Gruppo girevole Slewing group Table tournante Grupo giratorio	SK1700		1	2300	1810	2900	5900	-	
	SN2050		1	2450	1810	2900	6200	-	
Carrello Trolley Chariot Carretilla	P6		1	1600	1620	710	320	-	
Ballatoio con cabina Access balcony with cabin Porte cabine Balcòn corrido con cabina			1	2500	2150	2450	1000	-	
Blocchi contrappeso Counterweight block Contre-poids Bloques de contrapeso	VX24 VS12		VS12	1	1000	200	2500	1200	1200
			VX24	8	1000	400	2500	2400	19200

PESI E INGOMBRI – PACKING LIST – LISTE DE COLISAGE – GEWICHT UND ABMESSUNGEN

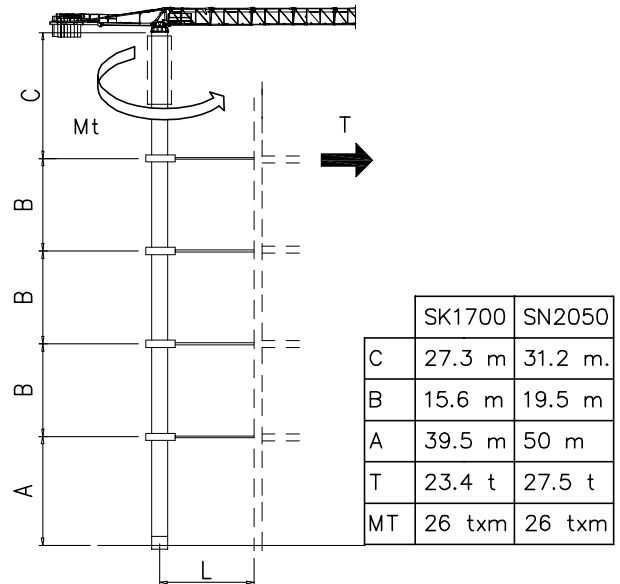
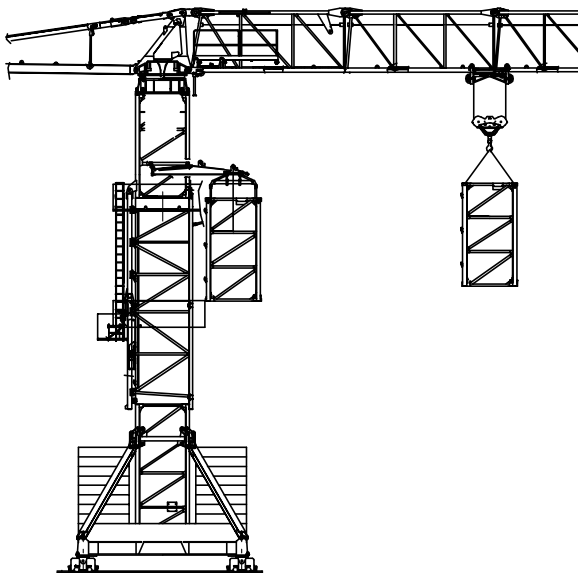
Denominazione Description	Disegno Draw	Pezzi Pieces	Dimensioni-Dimensions (mm)			Peso-Weight (kg)		
			L	W	H	Unit	Total	
Elemento di torre Mast element Elément de mât Elemento de torre	STD039 	SK1700	-	3900	1785	1785	1750	-
		SN2050	-	3900	2110	2110	2320	-
	STD052 	SK1700	-	5200	1785	1785	2250	-
		SN2050	-	5200	2110	2110	2850	-
	STD117 	SK1700	-	11700	1785	1785	4690	-
		SN2050	-	11700	2110	2110	5790	-
	SB039 	SK1700	-	3900	1785	1785	2100	-
		SN2050	-	3900	2110	2110	2710	-
	SB052 	SK1700	-	5200	1785	1785	2600	-
		SN2050	-	5200	2110	2110	3350	-
SB117 	SK1700	-	11700	1785	1785	4830	-	
	SN2050	-	11700	2110	2110	7000	-	
BF039 	SK1700	-	3900	1785	1785	2450	-	
	SN2050	-	3900	2110	2110	3370	-	
BF052 	SK1700	-	5200	1785	1785	3390	-	
	SN2050	-	5200	2110	2110	3880	-	
BF117 	SK1700	-	11700	1785	1785	6920	-	
	SN2050	-	11700	2110	2110	8180	-	
Elemento di base Base element Mat de base Elemento de base	BA052 	SK1700	1	5200	2060	2060	3650	-
		SN2050	1	5200	2260	2260	4040	-
Carro di base Base carriage Chassis de base Cruceta de base		5x5	1	7550	670	780	2300	2300
		6x6	1	8870	670	780	2500	2500
		5x5	2	3530	420	780	1060	2120
		6x6	2	4320	420	780	1200	2400
Puntoni di base Rafter Jambes de force Cabrios de base		5x5	4	4250	240	300	280	1120
		6x6	4	4560	420	300	420	1680
Elemento a perdere Disposable frame Chassis a perdre Bastidor desechable		SK1700	1	1840	1910	1910	1430	-
		SN2050	1	2600	2260	2260	2030	-
Elemento recuperabile Recoverable frame Chassis récupérable Bastidor recuperable		SK1700	1	1300	2170	2170	1720	-
		SN2050	1	1300	2620	2620	1860	-
Bogie di traslazione Driven bogie Boggie motorisèe Balancin de traslaciòn			4	1160	700	600	700	2800
Blocco zavorra di base Base ballast block Lest de base Blaque de lastre		5x5	2	5300	1000	600	7300	14600
		6x6	2	6400	1200	600	10600	21200
		5x5	-	4100	1600	300	3500	-
		6x6	-	4800	2000	300	5070	-
Corsoio di montaggio Climbing cage Cage de montage Jaula de montaje		SK1700	1	8300	2600	2500	6000	-
		SN2050	1	8300	2900	2700	6700	-

GRU IN CAVEDIO – TELESCOPAGE SUR DALLES – CLIMBING CRANE – KLETTERKRANE IM GEBAUDE

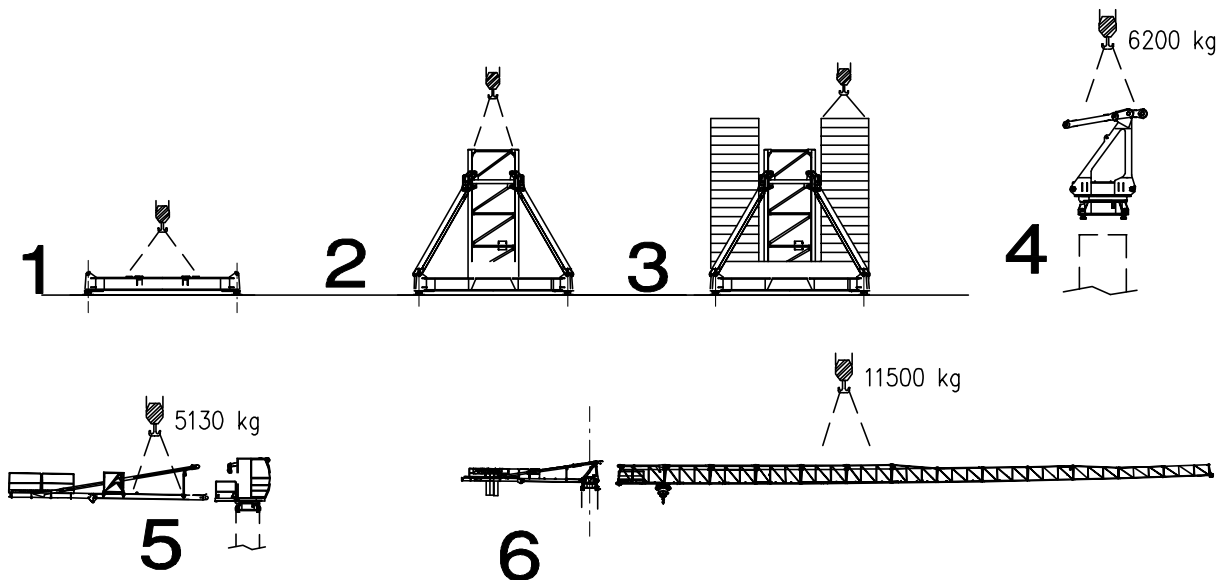


SN2050	H (m)	A (m)	R (t)	P (t)
	9	9	45.3	
	10	10	42	
	11	11	39.3	
	12	12	37	
	13	13	35	
	14	14	33.4	
	15	15	32	
	16	16	30.7	
	17	17	29.6	
	18	18	28.6	
Apertura passaggio gru Opening for crane passing 	19	19	27.8	
	20	20	27	

\* SOPRALZO IDRAULICO – TELESCOPABLE – EXTERNAL CLIMBING – KLETTERKRANE



Montaggio – Montage – Erection – Montage – Montaje – Montagem



Meccanismi – Mechanisms – Mécanismes – Antriebe – Mecanismos

Sollevamento V33.60 Hoisting Levage Heben Elevaciòn Elevaçao														V33.60 24 kW 40 kVA  260 m
	m/min	2.5	15	27	43	56	71	1.2	7.5	13.5	21.5	28	35.5	
	t	4	4	4	2.5	1.7	0.8	8	8	8	5	3.4	1.6	

Sollevamento V45.90 Hoisting Levage Heben Elevaciòn Elevaçao														V45.90 33 kW 58 kVA  340 m 700 m (L)
	m/min	4	18	36	56	74	90	2	9	18	28	37	45	
	t	4	4	4	3	2	1	8	8	8	6	4	2	

Carrello Trolleying Distribution Katzfahren Distribuciòn Distribuçao			0 → 80	m/min	4 kW	Potenza elettrica necessaria Puissance électrique nécessaire Necessary electric power Anschlusswert – Potencia
Rotazione Slewing Orientation Schwenken Orientaciòn Rotaçao			0 → 0,9	giri/min tr/min rp/min	4.4 kW @ 1200rpm n° 2 x 2.2 kW	
Traslazione Travelling Translation Kranfahren Traslaciòn Traslaçao			0 → 20	m/min	7.5 kW	

Rete elettrica – Réseau – Mains supply – Netzstrom – Red – Rede electrica	400V – 50 Hz
---	--------------

**AFM Gru** FMgru s.r.l.  
via Emilia 11-29010 Pontenure PC ITALY  
tel. 0523/510446 ric.aut. fax 0523/510365  
www.fmgru.it e-mail: info@fmgru.com

FEM 1.001  
2000/14/CE



Documento commerciale non contrattuale  
Per tutte le informazioni tecniche riferirsi  
alle corrispondenti istruzioni

Unverbindliches Vertriebsdokument.  
Für technische Informationen, siehe die  
entsprechenden Anweisungen.

This commercial document is not legally  
binding. For any technical information, please  
refer to the corresponding instructions.

Documento comercial non contractual  
Para cuatquities informacìon tecnica,  
ver la noticia correspondiente.

Code: 15ICA37T45A1		
Ed.	Data	Rev Data
1	28.11.11	0 28.11.11